

**Description:** Dust sealing preparation

**Intended use:** To bind stockpiles, embankments, unpaved roadways & shoulders, yard areas, parking lots, landscaping, streetscaping and dusty areas to suppress dust.

**Features & Benefits:**

FEATURES	BENEFITS
Tailor Made Solutions	Can be used a dilution rates from 2% - 30% to suit application.
Binds Soil particle together	Stops dust and dust clouds.
Ecologically Safe & accepted	No environmental impact.
Reduces Road surface deterioration	Saves road maintenance costs from approx. 6 months to many years.
Does not change road profile	Adds traction and safety in both wet and dry conditions.
Built in UV filters	Maximum resistance to rain, UV light and wind.
Made up of long chain polymer molecules	Does not become brittle or pothole.
Reduces impact of dust on engines, clutches & brakes	Reduces vehicle maintenance especially in the mining industry where brakes, engine and clutches are effected by the dust and replacement costs of such parts are high.

**Limitations:** Avoid strong acids and oxidising agents.

**Sizes:** 5L, 20L, 205L

**Dilution:** Typical Application: 30% Soil Stabilising Solution mixed with 1% portland cement and water and added to a water truck.

**Coverage:** Approx. 1litre/M<sup>2</sup>

**Drying time:** Fully cured within 24 hours.

**Clean up:** Water cleanup.

**Typical Physical Properties:**

<b>Appearance &amp; Odour</b>	Opaque white - off white viscous liquid. Mild fruity odour.
<b>Melting/Softening Point</b>	No specific data. Liquid at normal temperatures.
<b>Boiling Point &amp; Vapour Pressure</b>	Approx. 100°C at 100kPa; 2.37 kPa at 20°C
<b>Volatile Materials</b>	Water component
<b>Flammability</b>	Does not burn
<b>pH</b>	4.0 to 6.0
<b>Specific Gravity</b>	1.10
<b>Solubility in Water</b>	Completely soluble in water.
<b>Corrosiveness</b>	Non corrosive
<b>Shelf Life</b>	2 years after manufacture date in sealed container.

**Identification:**

<b>UN No.</b>	None Allocated
<b>Dangerous Goods Class</b>	Non Dangerous good
<b>Hazchem Code</b>	None Allocated
<b>Sub Risk Class</b>	None Allocated
<b>Packaging Group</b>	None Allocated
<b>Poison Schedule</b>	Not Scheduled

**Application Instructions:**

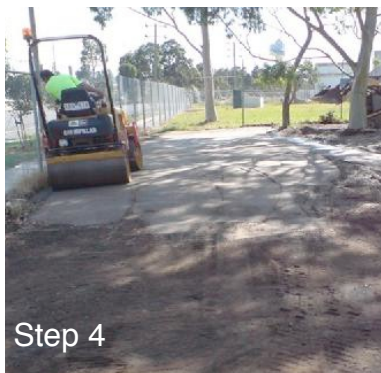
**Step 1:** Purchase of crushed granite - 20 minus particle size (Crushed granite can be replaced with a variety of other particles, consult with Cyndan technical staff for more information)

**Step 2:** Distribution of crushed granite over the site.

**Step 3:** The Application of the Cyndan Soil Stabilising Solution used at 30% solution with the addition of 1% portland cement. The Soil Stabilising Solution, cement and water were applied at a rate of 1 litre of mixed solution to 1M<sup>2</sup>.



**Step 4:** After application of Soil Stabilising Solution, the area is rolled whilst still wet.



**The Result:** An area that is stable, flexible, resilient & water resistant.

Within a few day of this particular application, it rained, other adjoining sites could not operate, however, this site was in complete operation.

**Safety:**

If product gets into eyes, immediately flush with water until chemical is removed. Keep out of reach of children. Do not take internally. In case of ingestion, do NOT induce vomiting, give some water to drink. If symptoms develop call a physician or Poison Information Centre on 131126. If skin contact occurs wash thoroughly with soap and water. CONSULT THE MSDS FOR SAFETY, STORAGE AND FIRST AID INSTRUCTIONS BEFORE USING THIS PRODUCT.

**References:**

For references on Soil Stabilising Solution, see the Cyndan website at [www.cyndan.com.au](http://www.cyndan.com.au)

**Warranty:**

Cyndan Chemicals warrants that for a period of 24 months from the date of manufacture or for the duration of the published shelf life, whichever is less, that at the time of shipment, the product is free of manufacturing defects and conforms to published specifications in force on the date of acceptance by "the company" of the order. Cyndan Chemicals shall only be held liable under this warranty if the material has been stored, used and applied in accordance with Cyndan's instructions in the products technical data sheet. Liability is limited to replacement of product.

